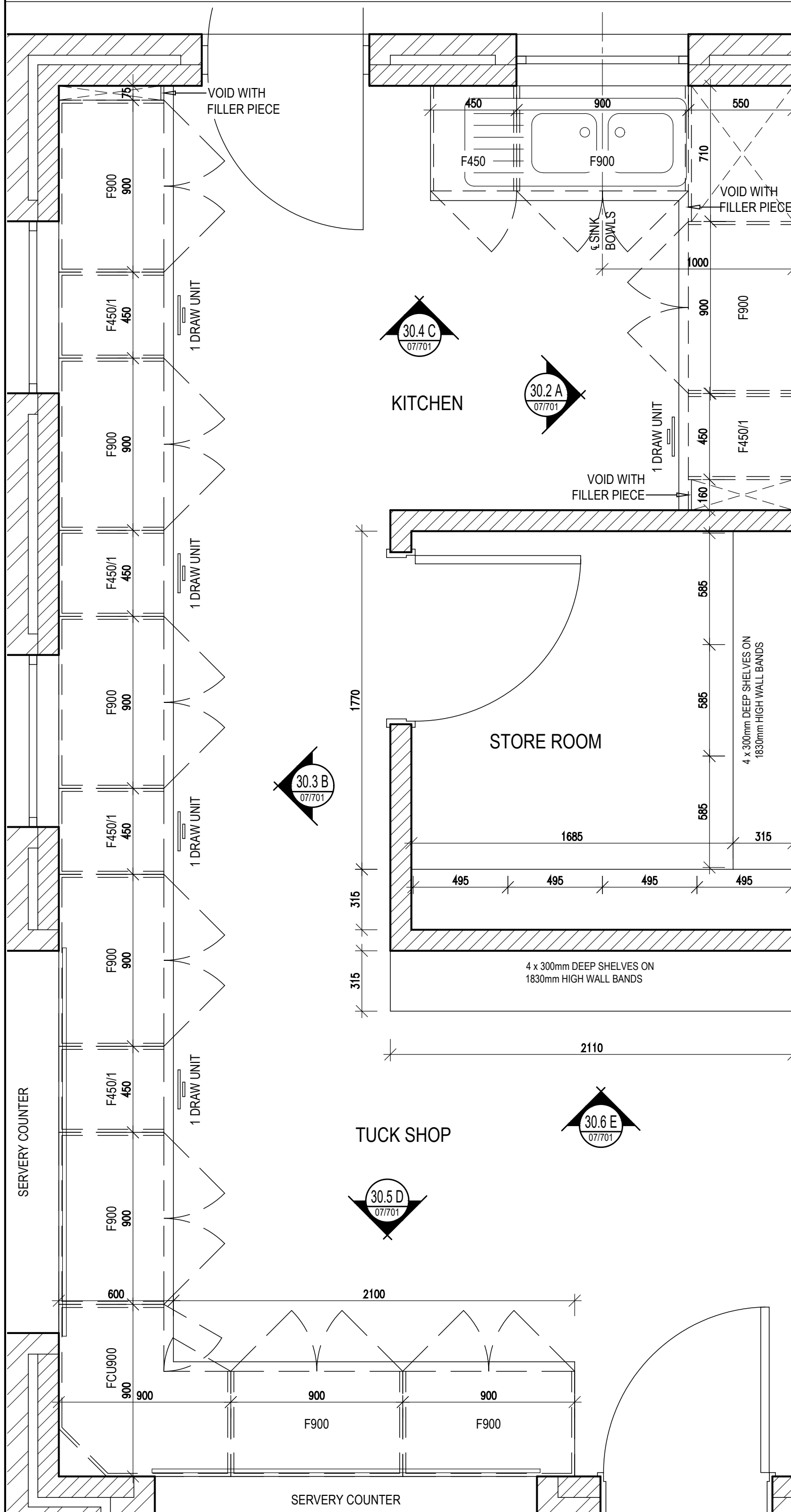
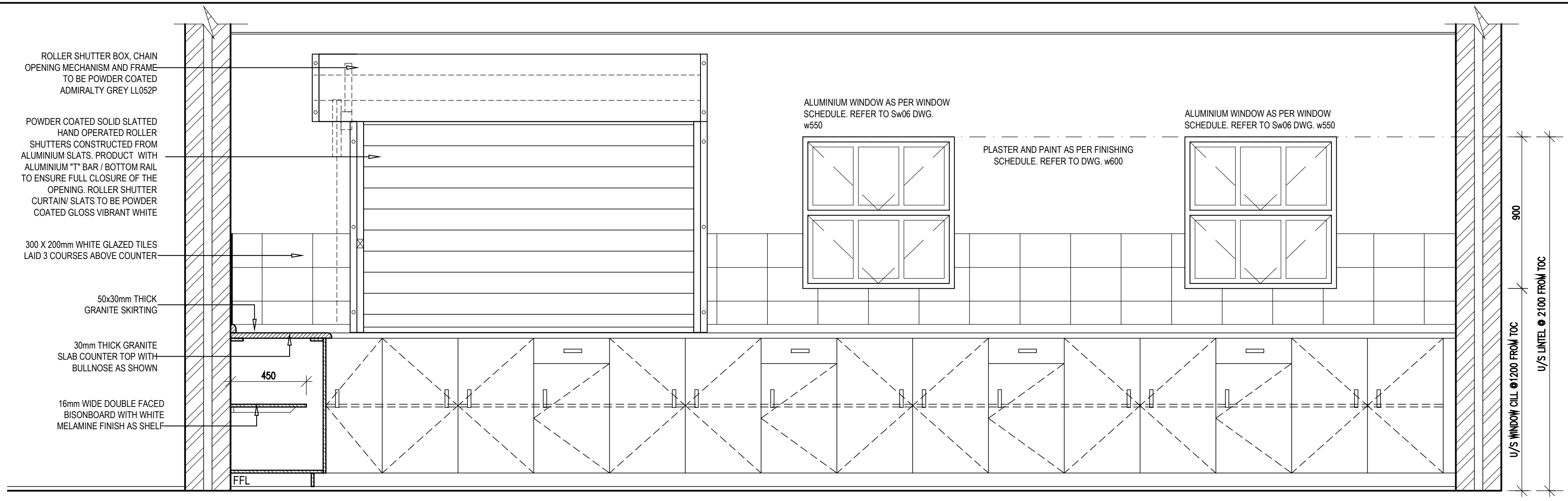


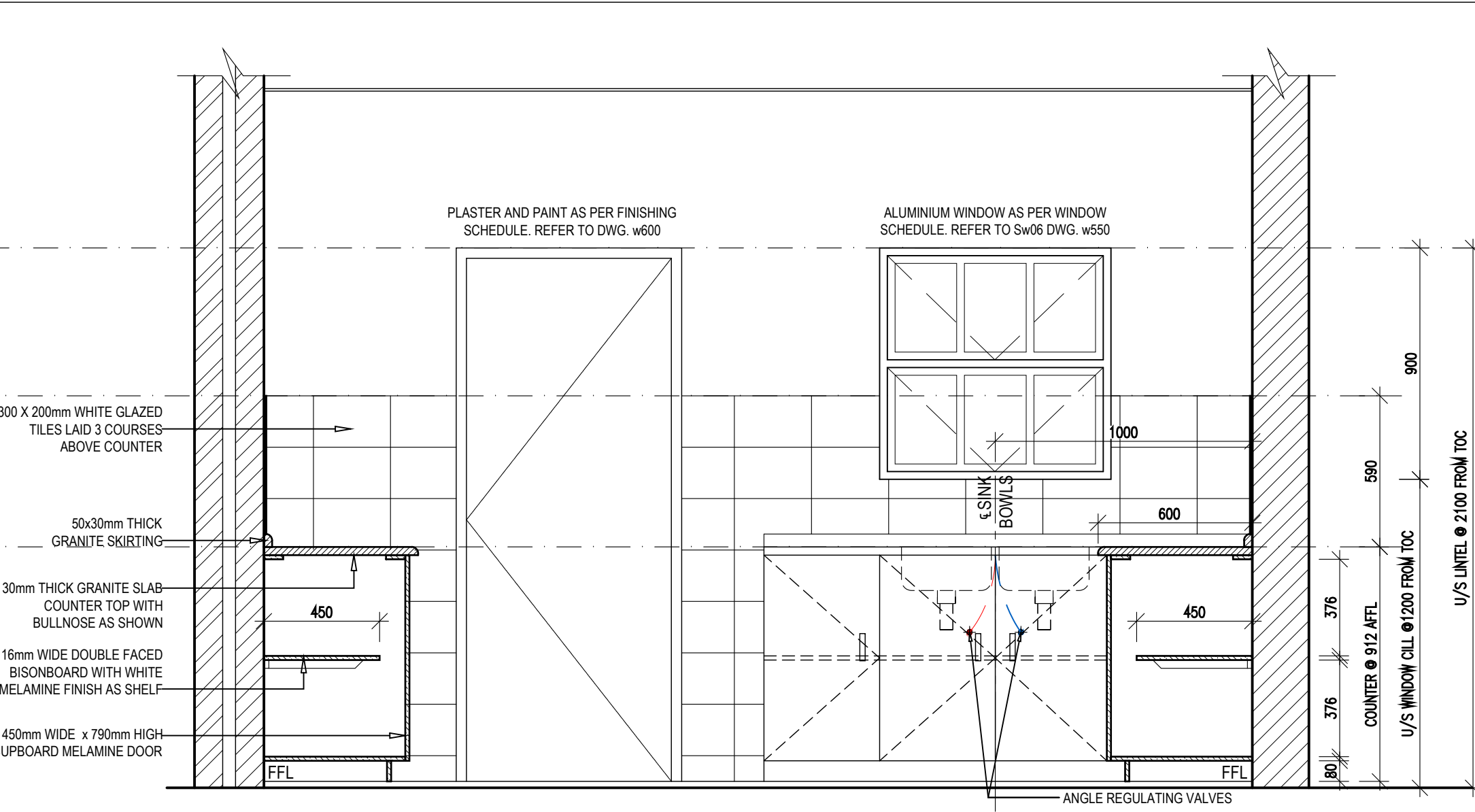
DETAIL 30.2: SECTIONAL ELEVATION A SCALE 1:20



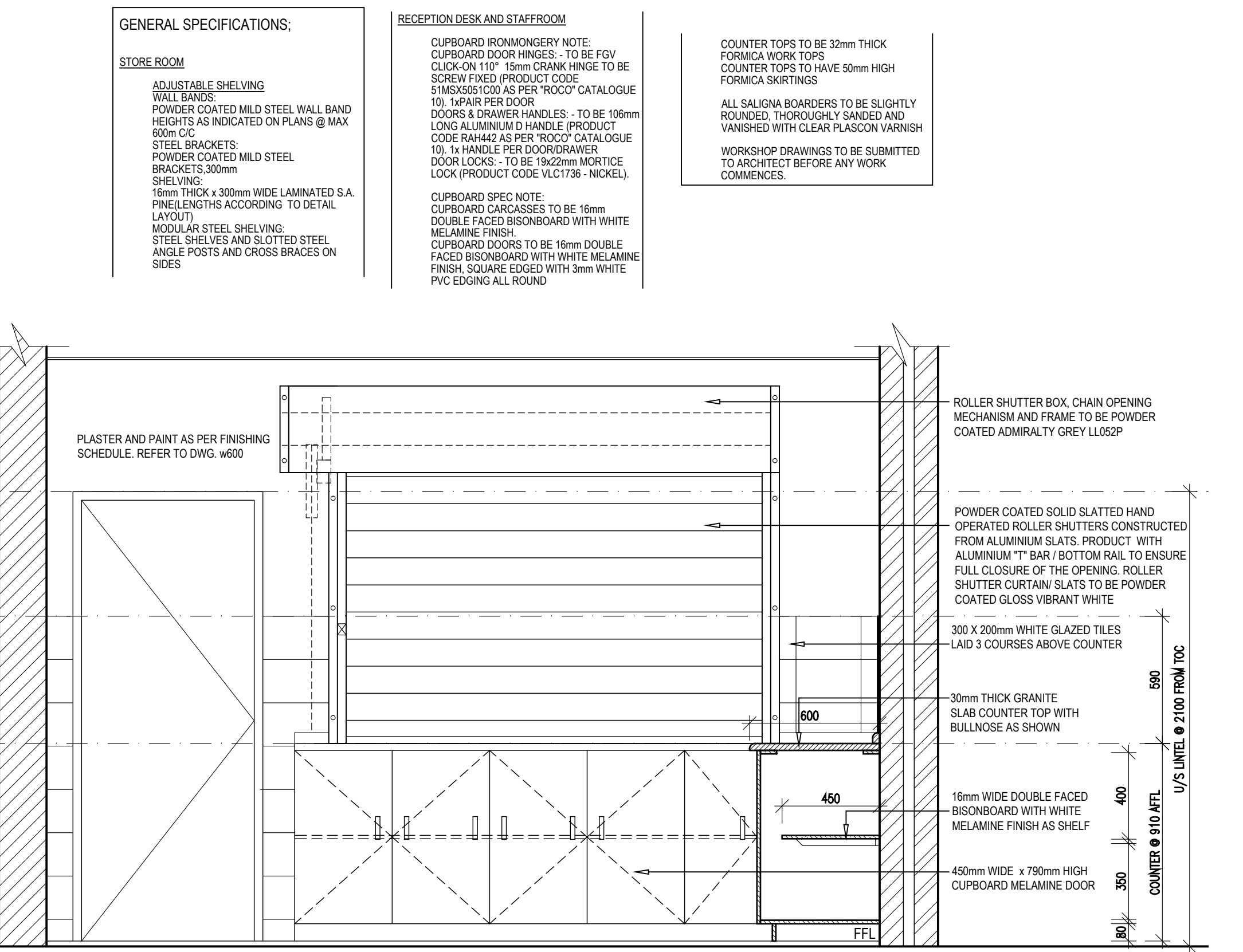
DETAIL 30.1: SECTIONAL ELEVATION A SCALE 1:20



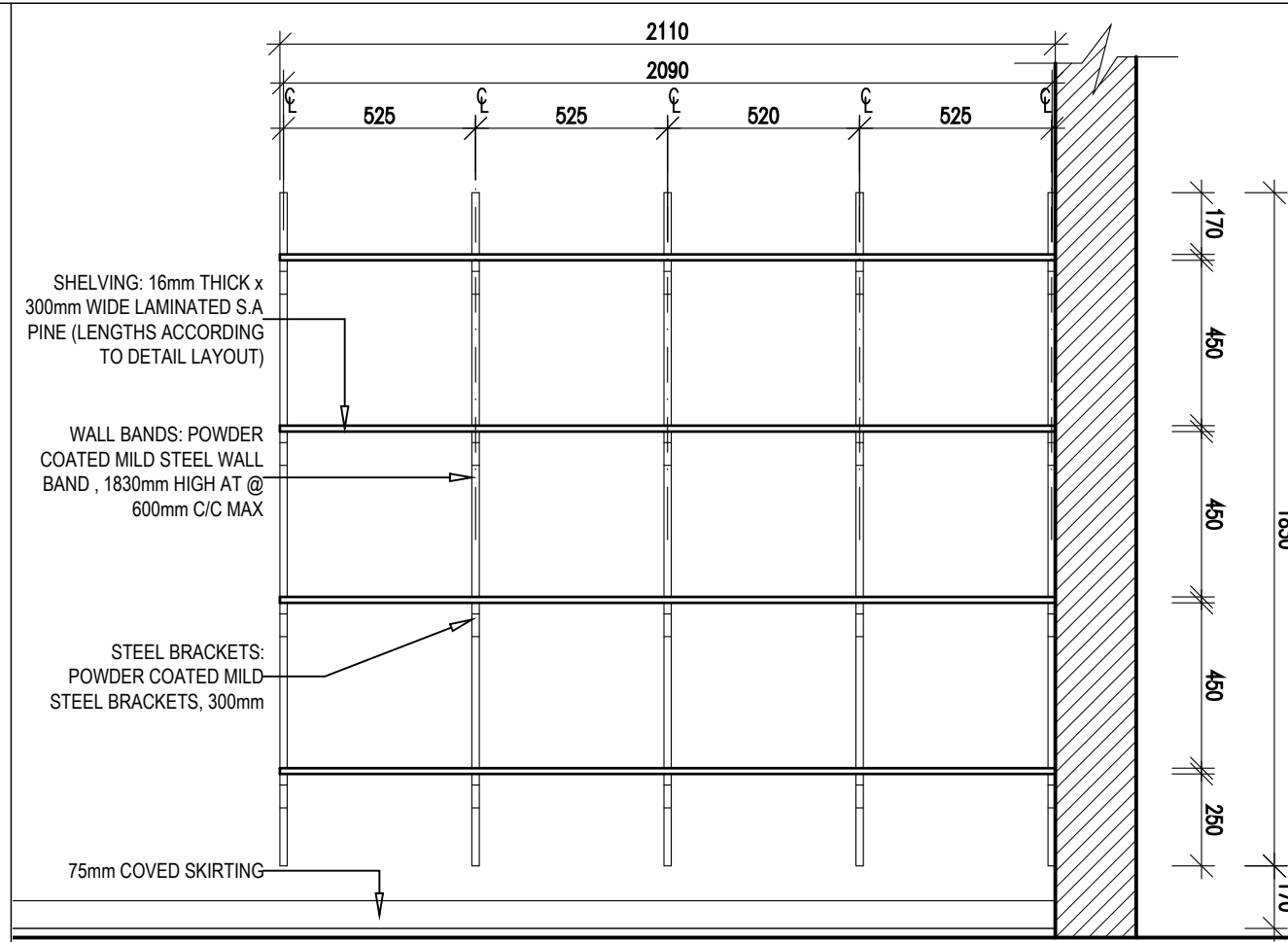
DETAIL 30.3: SECTIONAL ELEVATION B SCALE 1:20



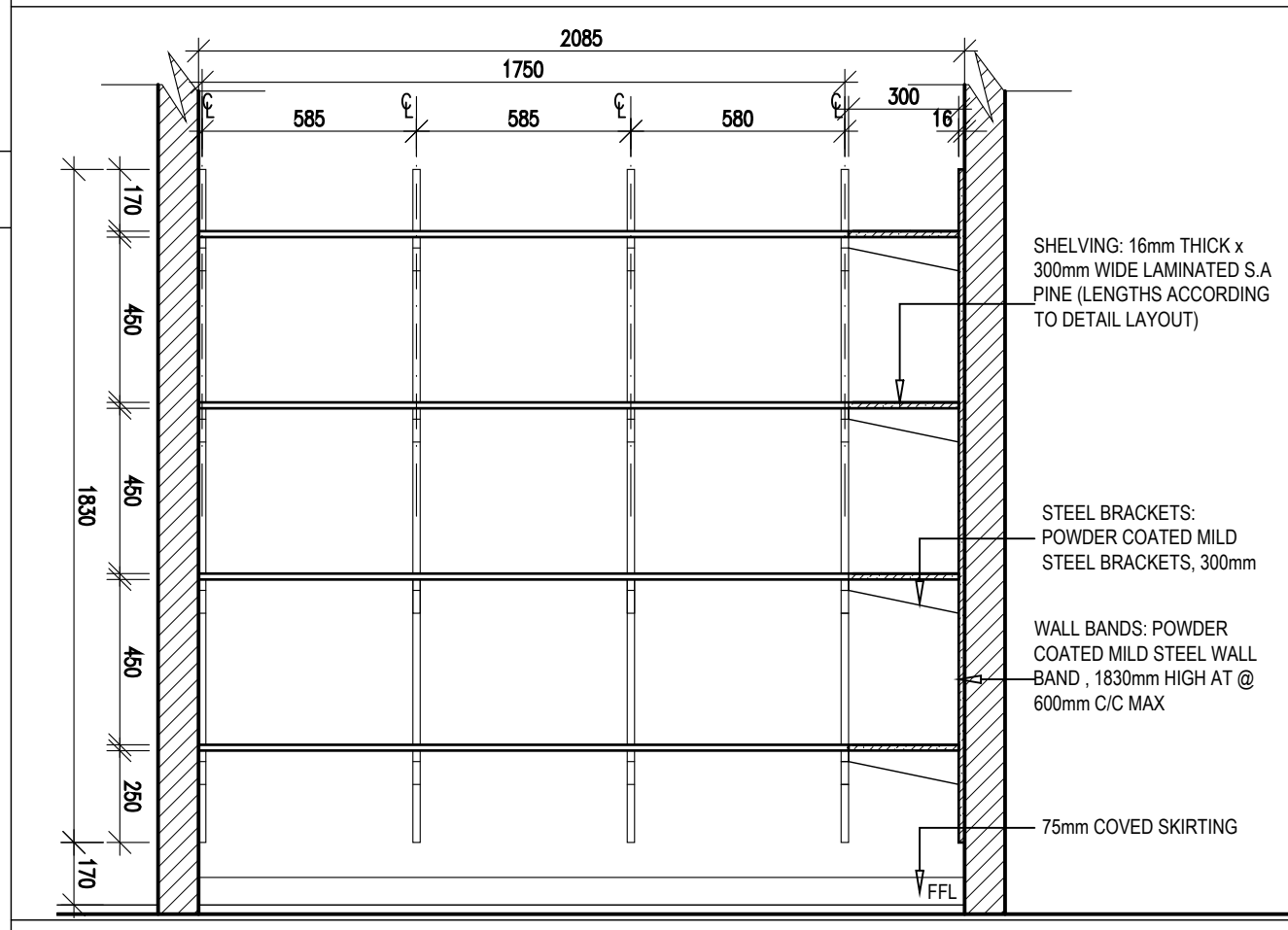
DETAIL 30.4: SECTIONAL ELEVATION C SCALE 1:20



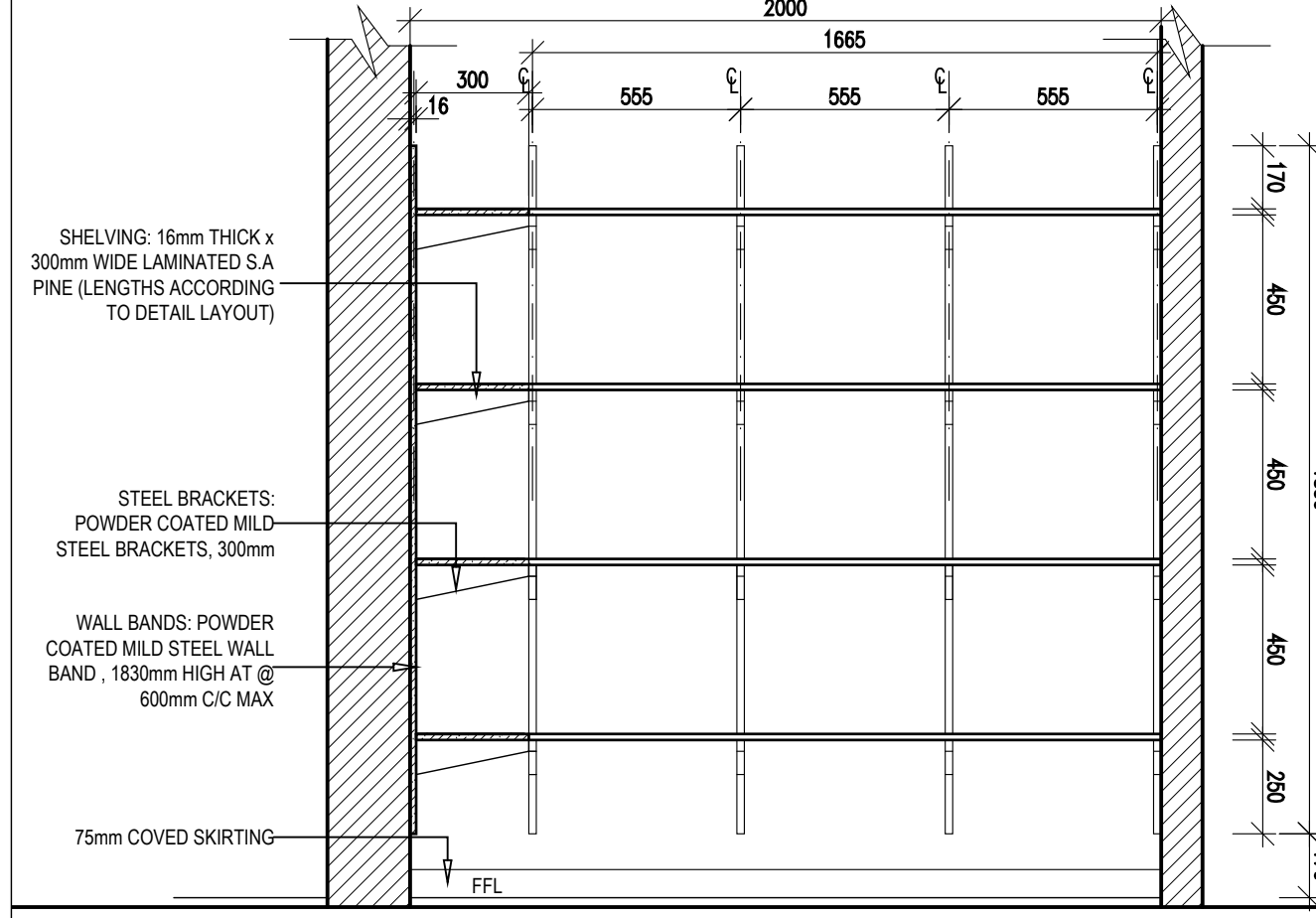
DETAIL 30.5: SECTIONAL ELEVATION D SCALE 1:20



DETAIL 30.6: ELEVATION E SCALE 1:20



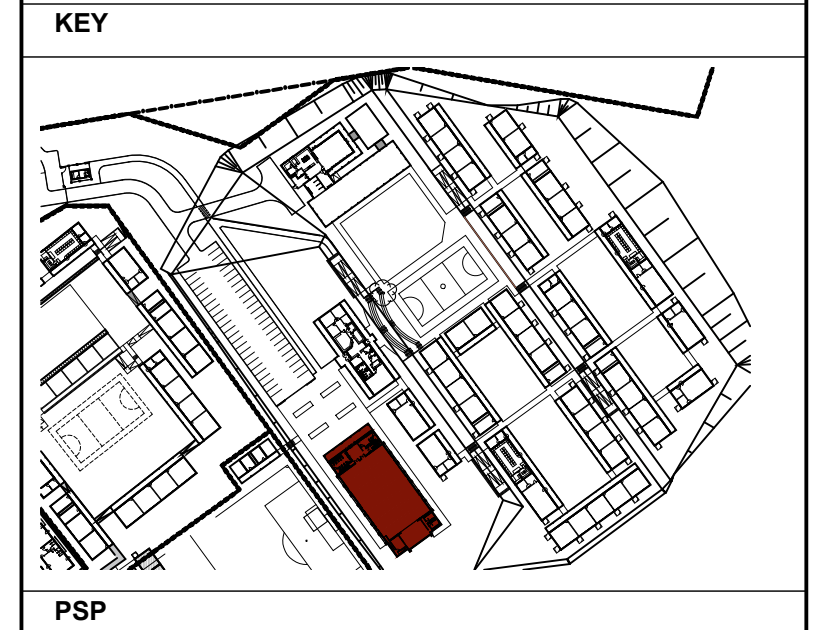
DETAIL 30.7: SECTIONAL ELEVATION F SCALE 1:20



DETAIL 30.8: SECTIONAL ELEVATION G SCALE 1:20

NO.	DATE	REVISION	DRAWN
A	2021-03-01	ISSUED FOR INFORMATION	DW
B	2022-07-08 2022-04-13	ISSUED FOR MEASURE ISSUED FOR INFORMATION (EPMS) 1. DWG NO. CHANGED FROM 1617 TO 2204	DW

ISSUED FOR
APPROVAL



PSP

ARCHITECT

- mpande - consultants
architects & project managers

13 Cumberland Street, Mthatha
P.O. Box 7185
Mthatha, 5100
Tel: 041-532-5382
Fax: 041-548-2131

18 Lower Goldenhills Drive,
Emmarentia, Johannesburg
P.O. Box 61624
Auckland Park, 2006
Tel: 011-486-2623
Fax: 011-486-1935
Email: mpande@mpandecol.co.za

ARCHITECTURAL PROFESSIONAL SACAP NUMBERS:
H.L. MANTEL SACAP 3045

IMPLEMENTED BY

INDEPENDENT DEVELOPMENT TRUST

SIGNATURE	DATE	SHEET NO.
DESIGNED		A1
DRAWN		SCALE
VERIFIED		1:100
VALIDATED		STATUS LEGEND
		I = INFORMATION
		FA = FOR APPROVAL
		T = TENDER
		C = CONSTRUCTION
		AB = AS BUILT

CLIENT

Province of the
EASTERN CAPE
EDUCATION

IMPLEMENTING AGENT

idt
Infrastructure Development Trust

PROJECT
DOE PORTFOLIO PROGRAMME
ESTABLISHMENT OF NEW SCHOOLS
HILLBROW - SENIOR SECONDARY SCHOOL
PROVINCE: EASTERN CAPE PROVINCE

DRAWING TITLE
MULTI-PURPOSE HALL (BLOCK S-Y)
JOINERY PART 2 OF 3

DRAWING DESCRIPTION
--
DETAIL PLAN SCALE 1:20

DWG NUMBER	DISCIPLINE	DRAWING NUMBER	STATUS	REVISION
200500293	ARCH	2204 w07-07/01	FA	B